



"Seeing how much money I earned allowed me to see how good this business really is, so I decided to keep my focus on improving it." Joseph

Joseph Lop is one of the local farmers receiving support from the FSA. He is now running a successful poultry business and is receiving a consistent income. He hopes to increase the number of roosters he rears to 100 and plans to build a new and much larger chicken house when he raises enough money.



IMPROVING THE LIVES OF 650 FARMERS AND THEIR FAMILIES – OVER **3000** PEOPLE



FUNDING NEEDED **\$350,000**



PROJECT TIMELINE **2015-2020**

YOUR DONATION HAS FIVE TIMES THE IMPACT.

Through our unique relationship with the New Zealand Government, the Ministry of Foreign Affairs and Trade has committed to multiply each donation from 'You & Oxfam' supporters – that means every \$1 donated can achieve \$5 worth of change.



Oxfam New Zealand, PO Box 68357, Newton, Auckland 1145



CALL 0800 600 700



VISIT www.oxfam.org.nz



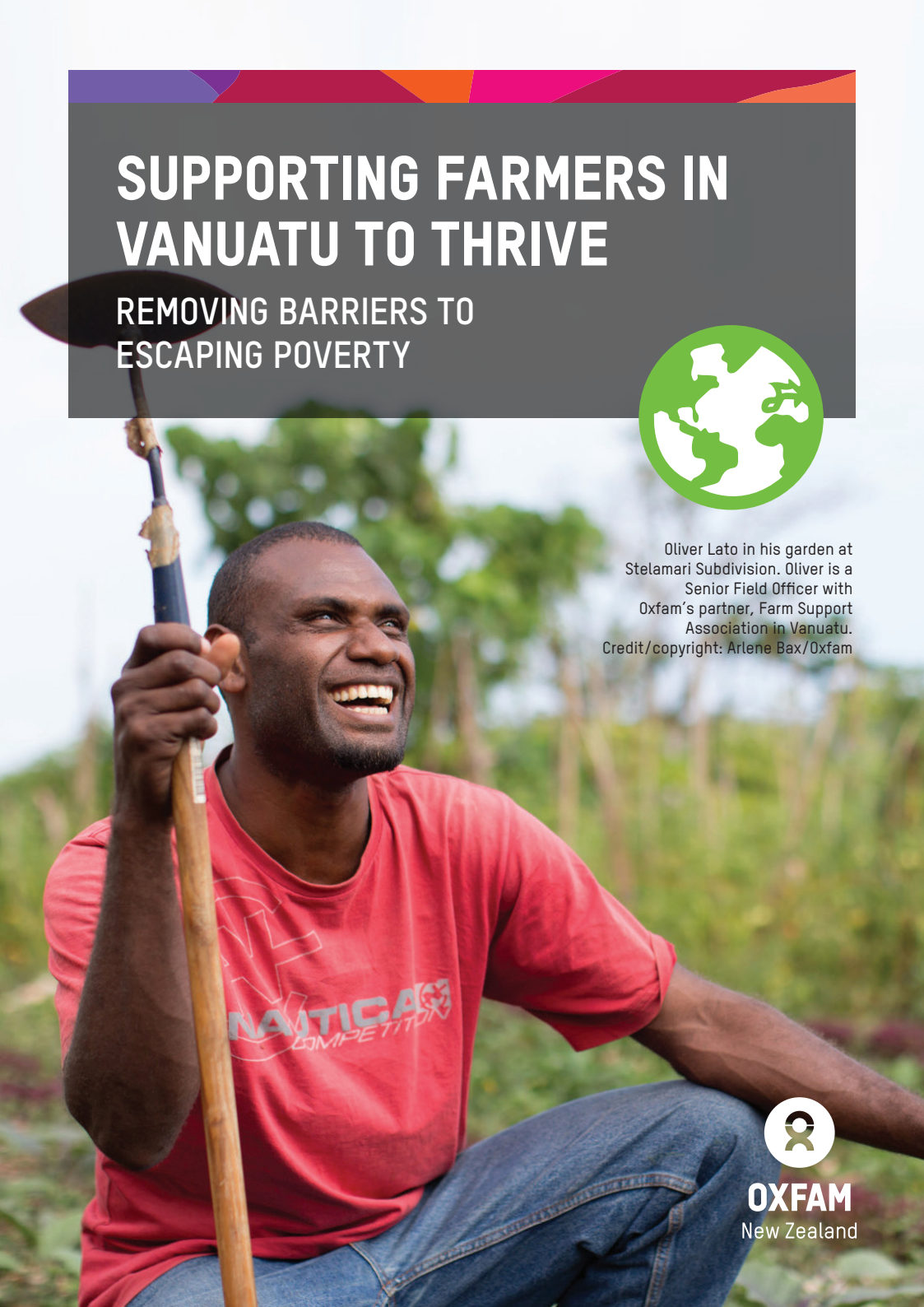
OXFAM
New Zealand

SUPPORTING FARMERS IN VANUATU TO THRIVE


REMOVING BARRIERS TO ESCAPING POVERTY



Oliver Lato in his garden at Stelamari Subdivision. Oliver is a Senior Field Officer with Oxfam's partner, Farm Support Association in Vanuatu.
Credit/copyright: Arlene Bax/Oxfam



OXFAM
New Zealand



Meet Katanic Nasse. As one of the most recognised female farmers and leaders in her village, Katanic was selected by FSA to be part of the THRIVE programme.

"It was great support because they not only provided me with vegetable seeds but also training that taught me a variety ways of how I can plot and look after my crops by using a nursery.

These techniques were so new and exciting; it was something I had no prior knowledge about.

As a mother, I want to see my children have a higher education and I am proud to see them succeeding." Katanic

THE CHALLENGE

- Of all the Pacific Island countries, Vanuatu is the most dependent on agriculture. Although Vanuatu's agricultural exports have the highest value of any Pacific Island country, this is mainly from large commercial farms. A key challenge is developing pathways for commercialisation of traditional farming systems, allowing farmers to generate a decent income from their crops.
- With Vanuatu's population projected to double by 2050, there is a greater need than ever before for rural youth to have the skills, motivation and resources to be able to generate sustainable livelihoods from agriculture. However, young people are often unwilling to start agricultural businesses, because of the low prestige of the sector and barriers for young women to access land.
- Oxfam's THRIVE programme helps to directly increase the food security, income, assets and well-being of farmers and their families by enabling them to increase their knowledge and skills by providing technical advice, hands-on training, and mentoring.



LOCAL PARTNER, FSA, HAS OVER 30 YEARS OF EXPERIENCE WORKING WITH FARMERS.



75% OF THE POPULATION LIVES IN RURAL AREAS

THE PROGRAMME

- We've partnered with Farm Support Association (FSA), a local organisation that specialises in developing farming as a profession, to support the expansion of sustainable agriculture in Vanuatu. Through technical advice, hands-on training and mentoring, THRIVE demonstrates that small-scale farming can be a viable business, and enables more women and youth to gain a reliable livelihood from agriculture.
- 650 small-scale farmers – most of them women – are learning new techniques in farming production and management, receiving ongoing coaching in the field, sharing knowledge, and selling chickens, eggs, pigs, vegetables and pineapples locally and in Port Vila.
- 150 young women and men will have the opportunity to complete a three-year Young Farmers Development Course and graduate with the skills to sustainably manage a small-scale farm as a business. One of the entry requirements is that the young farmers are given sustained access to family land – a huge and ground-breaking opportunity for young women.
- We support FSA with financial, organisational and programme management to lift efficiency, accountability, sustainability and, ultimately, more and better outcomes for farmers.